



**Parents, carers, young people and professionals – we need your help!**

**We need to know what works well for you and what doesn't to influence and shape the SEND strategy from 2024.**

**What is your experience of SEND in Suffolk as a parent, carer, young person or as a professional?**

**Please click on the link below to complete our short survey**

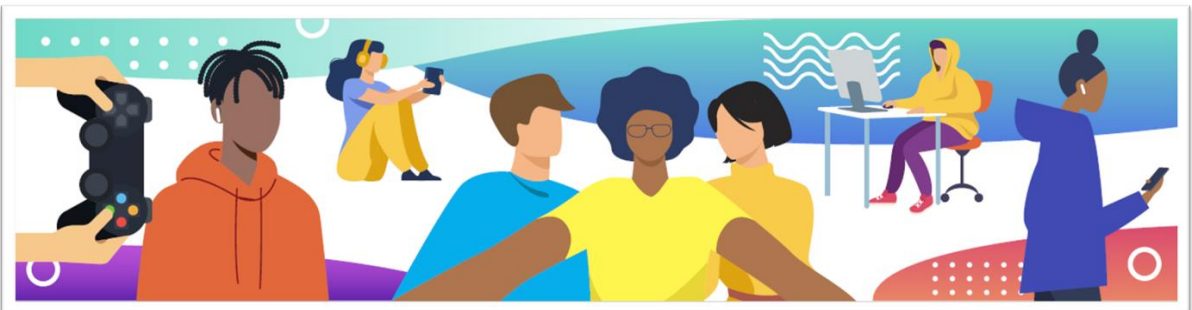
[SEND Strategy consultation \(smartsurvey.co.uk\)](https://smartsurvey.co.uk/SEND-Strategy-consultation)



More information can be found on the link below

[Suffolk InfoLink | Improving SEND services in Suffolk: our SEND Strategy](#)

**Thank you for taking the time – your opinions matter.**



**Consultation closes 7<sup>th</sup> December 2023**

