



Year 7 Success Evening

15 September 2022

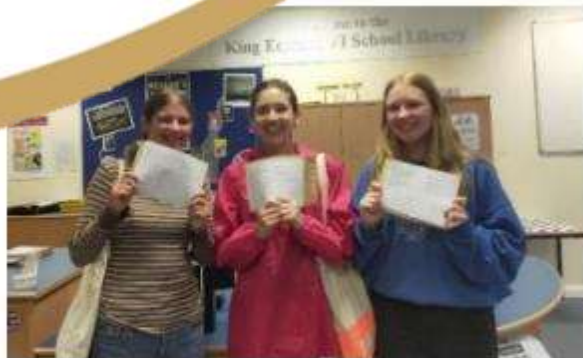


***A copy of this presentation will be made available
on the 'Joining Us' section of our website***

Respect | Aspiration | Creativity
Inspiring young people in Bury St Edmunds since 1550



Year 11 Success



Respect | Aspiration | Creativity
Inspiring young people in Bury St Edmunds since 1550



Our Core Values



Respect

Aspiration

Creativity

Respect | Aspiration | Creativity
Inspiring young people in Bury St Edmunds since 1550



Year 7 Success Evening

Meet the tutor

15 September 2022



***A copy of this presentation will be made available
on the 'Joining Us' section of our website***

Respect | Aspiration | Creativity
Inspiring young people in Bury St Edmunds since 1550



The role of the tutor at KEVI

- First point of contact for queries or concerns for tutees and parents
- Set the tone for the day
- Encourage high standards of work, behaviour, punctuality and uniform
- Wellbeing check
- Liaise with Year team over concerns
- Reward achievements and where necessary implement sanctions
- Monitor and review student progress and set up conversations around improvement



Homework

STUDY CLUB

Study Club runs in the Library after school with support from TAs.



THIRST
FOR
KNOWLEDGE

Independent
Learning



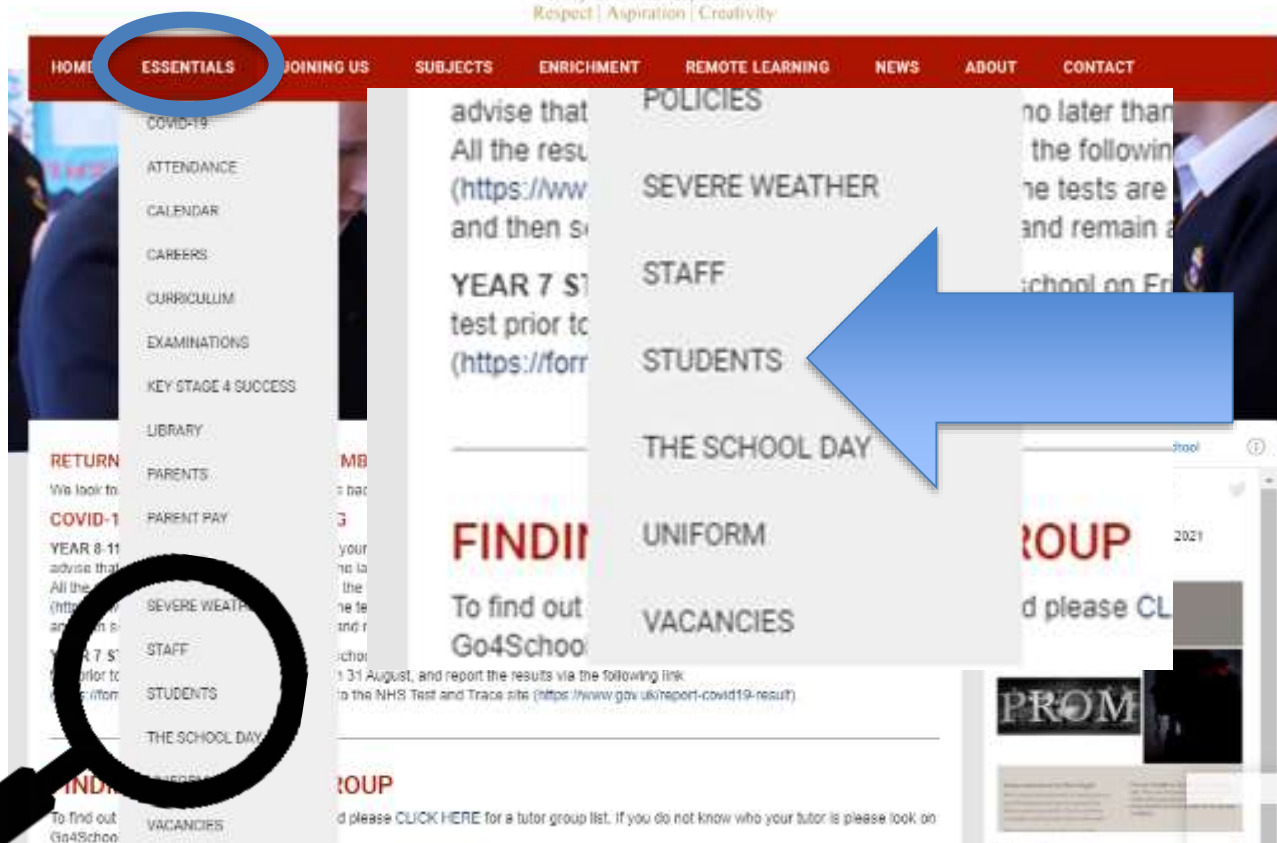
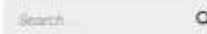
Respect | Aspiration | Creativity
Inspiring young people in Bury St Edmunds since 1550



Microsoft Teams



King Edward VI School
Bury St Edmunds, Suffolk
Respect | Aspiration | Creativity



Respect | Aspiration | Creativity
Inspiring young people in Bury St Edmunds since 1550



LEARNING AT HOME

Installing MS Teams

Attending Live Lessons

Using Console Devices

[🔗 Student Help Video](#)

1. Using a web browser

- Access your account via <http://login.microsoftonline.com/>
- Sign in to your account. Your username/email address is as follows:
 - Your username is your student email
 - Your password is the password you use to login to the school computers
- Left click on the Microsoft Teams application in the top window to open the web browser

2. Downloading the Application to your PC or Laptop

- Open this URL in your web browser:
<https://www.microsoft.com/en-gb/microsoft-365/microsoft-teams/download-app>
- Select the link 'Download for desktop'
- Follow the installation instructions
- Enter your sign in details as above (you should only need to do this once)

You can also download this app through the Microsoft Store application by clicking on the start icon, opening the Microsoft Store application and searching for 'Teams'. Then follow installation instructions.

3. Downloading the Application to a smart phone or tablet

- Open the Application Store on your device
- Search for 'Teams' and download the application
- Open the application
- Enter sign in details as above (you should only need to do this once)



Microsoft Teams

Username

yourstudentnumber@student2022.king-ed.suffolk.sch.uk

(student numbers are four numbers)

Password

Will have been changed in tutor time and is the same for logging on to the PCs in school.

- To reset passwords, students can do this with their thumb prints outside of IT support
- They will reset to Password1
- If students reset passwords, they will need to change these when they login to a school computer



Microsoft Teams

There is a 2 factor authentication security system and information and guidance around this can be found in the same area of our school website.

SCHOOL IT SERVICES

The password for Microsoft 365 (Teams, school email) and school computers are the same. If you change your password in school, it will also change the password for Microsoft 365.

Recently Microsoft have started to roll out additional security using 2 factor authentication for students' Microsoft accounts. This will mean that students will need to enter a unique access code when they log in to Office 365 from home. This can be done by following the on-screen instructions when asked for 'Additional Information'. You will be asked to enter a mobile number, and then you will be sent a code via SMS which you will need to enter to verify the login. If you change your phone you will need to come to the IT Support office to have your authentication number reset.

LEARNING AT HOME

[Installing MS Teams](#)

[Attending Live Lessons](#)



22 General Posts Files +

Y7 Lesson 1 (Intro) (1).pptx ...

↩ Reply

13 September 2021

Rob Herbert Monday 08:03
For any absent students:

L1.Introduction TEAMS.pptx ...

↩ Reply

14 September 2021

Bethany Warner Tuesday 07:35
Hi Year 7! Here is our lesson for today. We will get up

Lesson 1 - intro to chaucer.pptx

↩ Reply

Bethany Warner Yesterday 07:47
Do not forget to read 40 minutes a week and record.
You can always pop to the library to take out a word

↩ Reply

Assignments Yesterday 07:51

Reading Log and Quiz

Due 21 Sep

[View assignment](#)



Assignments Yesterday 07:51

Reading Log and Quiz

Due 21 Sep

[View assignment](#)



Join a club...



Intervention

50+

Monday	Running Club	Track	ALL	TA			
	GCSE Intervention	PE1	10 & 11	WZ			
	Boys Basketball	Dome	7-9	MC			
Tuesday	Recreational Football	Astro	7-11	WZ/SW/WZ/SW	Boys Football	Astro	10 & 11
	Tennis	Dome					
	Boys Rugby	Field					
	Boys Football	Astro					
Wednesday	Recreational Football	Astro					
	Girls Basketball	Dome					
	V-Cert Intervention	PE1					
Thursday	Recreational Football	Astro					
	Boys Basketball	Dome					
	GCSE Intervention	PE2					
	A Level Intervention	PE1					
Friday	Recreational Football	Astro					
	Girls Football	Astro					
	Girls Netball	Courts					



YEAR 7 RESIDENTIAL

THORPE WOODLANDS

www.thorpewoodlands.co.uk

2 NIGHTS AND 3 DAYS, STAYING AT THORPE WOODLANDS,
NEAR THETFORD, NORFOLK.

ACTIVITIES INCLUDE CANOEING, HIGH ROPES, TEAM CHALLENGES,
CLIMBING WALL, MOUNTAIN BIKING, CAVING, ZIP WIRE



YEAR 7 RESIDENTIAL

THORPE WOODLANDS

www.thorpewoodlands.co.uk

WHEN: 11TH – 13TH JULY OR 13TH – 15TH JULY

COST: £220 (APPROXIMATELY)

A LETTER WILL BE EMAILED BEFORE HALF-TERM WITH DETAILS OF
HOW TO RESERVE A PLACE.

ANY QUESTIONS, PLEASE EMAIL MRS LEPPARD –

LR@KING-ED.SUFFOLK.SCH.UK



King Edward VI School
Bury St Edmunds, Suffolk
Respect | Aspiration | Creativity

HOME **ESSENTIALS** JOINING US SUBJECTS ENRICHMENT REMOTE LEARNING NEWS

ATTENDANCE

CALENDAR

CAREERS

CURRICULUM

EXAMINATIONS

KEY STAGE 4 SUCCESS

LIBRARY

PARENTS

PARENT PAY

POLICIES

SEVERE WEATHER

STAFF

STUDENTS

THE SCHOOL DAY

FIND IT

UNIFORM

VACANCIES



MEMBER

back on Fri

G

your child tests themselves once, then to the NHS app or online to school. We no later than Thursday 2 September 2021 and the second test on Friday 5 September 2021. the following link (<https://forms.office.com/r/YxwV9k1tpY>) and to the NHS Test and Trace site the tests are not completed and the results reported, students will have to be tested in school and remain at home until the second test has been completed.

school on Friday 3 September if consent has been received. However, please complete a home 1 31 August, and report the results via the following link to the NHS Test and Trace site (<https://www.gov.uk/report-covid19-result>).

GROUP

d please [CLICK HERE](#) for a tutor group list. If you do not know who your tutor is please look on

Go4Schools

Go4Schools Mobile App – Quick Start Guide for Parents

[Instrument Loan Request](#)

Parent Bulletin

Supporting your child with English at Key Stage 3

Supporting your child with Maths at Key Stage 3

Supporting your child with homework

Homework Guidance for Parents

Supporting your child with Careers

Reading: A Guide for Parents

Classroom Expectations

Guidelines for the presentation of work

Parent Pay

[Parents' Evening Appointments](#)

Parent guide to booking appointments

Reporting and Assessment Calendar: Key Stage 3

Respect | Aspiration | Creativity

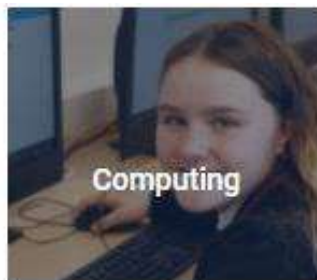
Inspiring young people in Bury St Edmunds since 1550



Our Curriculum



Science



Computing



Dance



Design & Technology



Drama



English



Visual Arts



Food & Nutrition



Geography



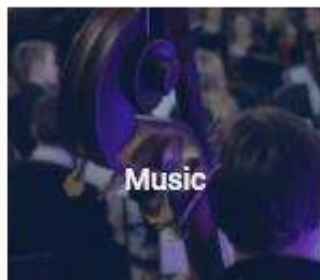
History



Maths



Modern Languages



Music



Philosophy & Ethics



Physical Education





Years 7-11

online Careers platform

xello

Powered by **CASCAID**



xello

Powered by **CASCAID**

equips our students with:

- the **knowledge**,
- **real-world skills**, and
- **planning capabilities**

to successfully navigate their future



Hey Angela!

0%

All Lessons

Year
7

Interests

Get Started



School Subjects at Work

0%

View All Lessons



About Me



Explore Options



Goals & Plans

Matchmaker

Personality Style

Mission Complete

Learning Style

Careers

Colleges & Universities

Courses &
Apprenticeships

Saved Options

My Plans

Assignments

What are your interests?

By: Miss Hahn

Due: 31 January 2022

Status: Not Submitted

Links & Resources



Careers - King Edward VI School



From Medicine to Marketing & Employed to Self-employed?



xello

Family Account

Introduction to Xello

xello

Xello is an online program that helps anyone, anywhere in the world create a successful future through self-knowledge, exploration, and planning.

[Contact Us](#)

OUR MODEL

Scroll for details

0:01 / 3:51

Respect | Aspiration | Creativity
Inspiring young people in Bury St Edmunds since 1550



Technology



Respect | Aspiration | Creativity
Inspiring young people in Bury St Edmunds since 1550



Special Educational Needs



The Porthole

Respect | Aspiration | Creativity
Inspiring young people in Bury St Edmunds since 1550



Respect | Aspiration | Creativity
Inspiring young people in Bury St Edmunds since 1550



Contacting the SEND team

Sharon Scott - SENCO

so@king-ed.suffolk.sch.uk



Karen Anderson – Assistant SENCO

kla@king-ed.suffolk.sch.uk

Jess Lee - Senior Administrator for Learning Support

jle@king-ed.suffolk.sch.uk



Top tips for lessons...

mistake
+
correction
=
learning

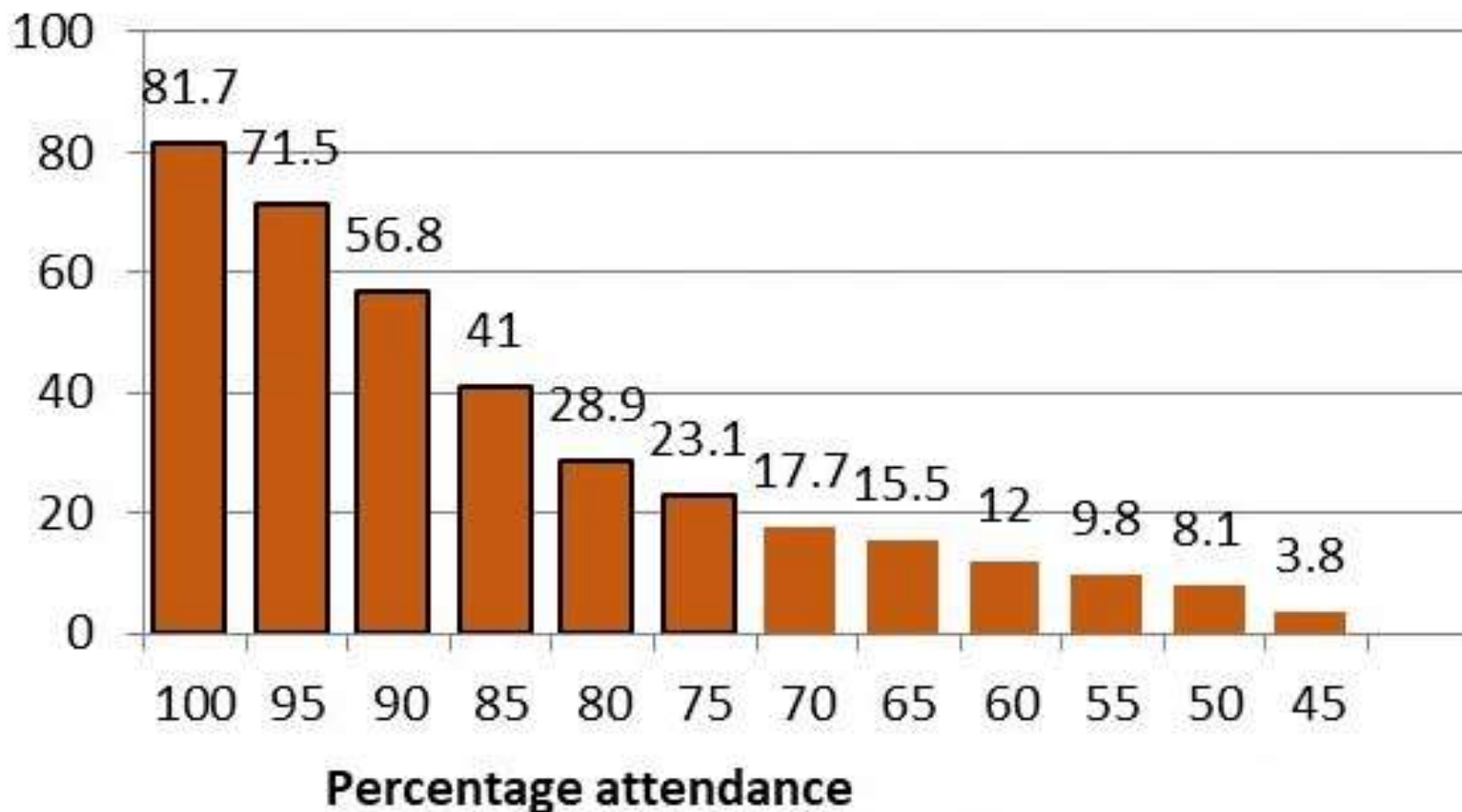




Attendance

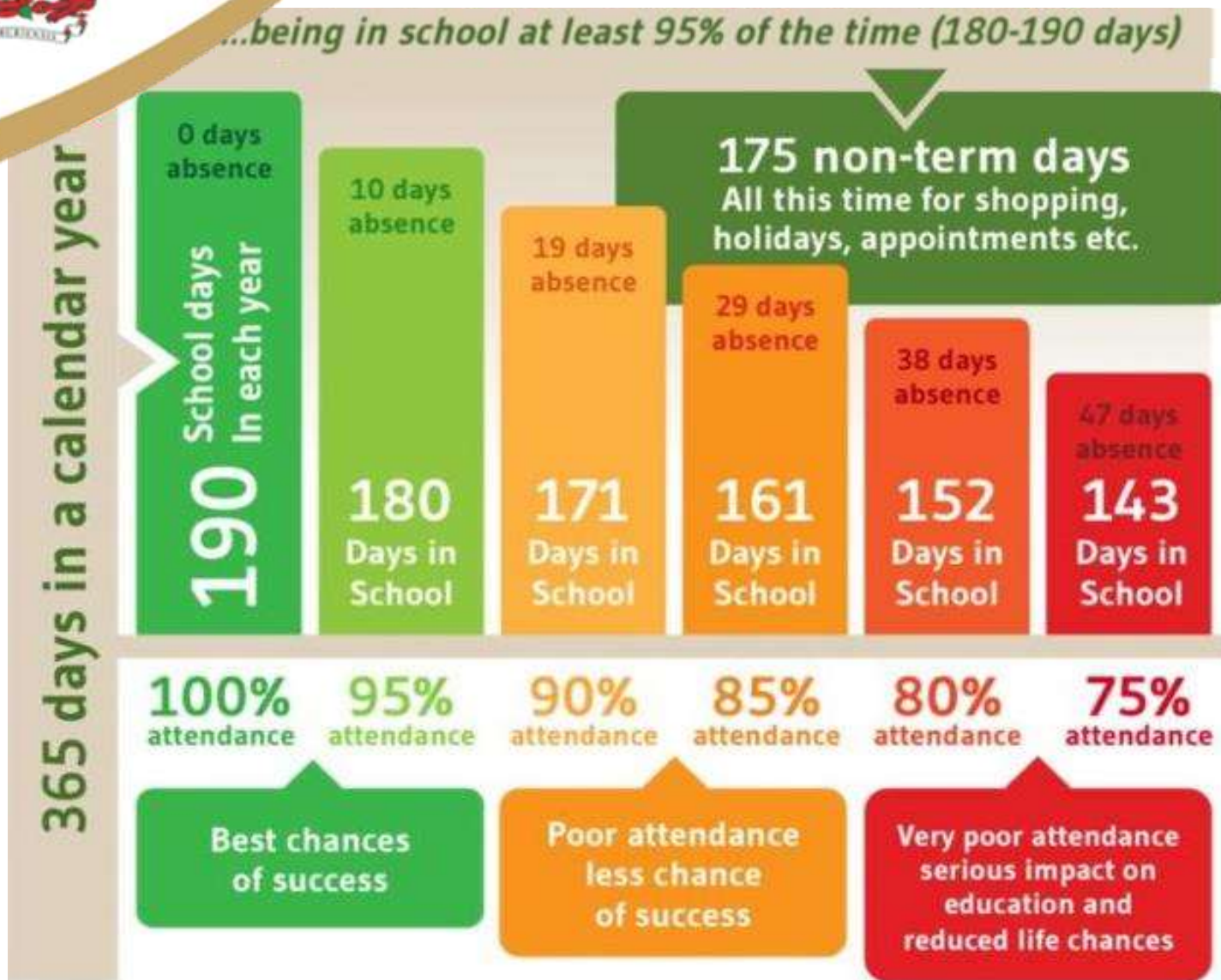
Chances of 5+ GCSE 5-9 grades including English and Maths

Percentage of students achieving





Attendance





Sue Sweny

Safeguarding Officer




Online **safety**

Pause (k)

https://www.parentsprotect.co.uk/internet-safety.htm?gclid=CjwKCAjwzMeFBhBwEiwAzwS8zGMUnoohZBe9IWeHbB04imJ4ZMEpEMsTxY5yLgchyanMs1fq8zA1tBoCLLgQAvD_BwE



A word cloud shaped like a map of Australia, featuring terms related to digital security and social media. The most prominent words include "PASSWORD", "PHONE", "EMAIL", "SOCIAL NETWORKS", "PROFILE", "CHAT", "PHOTO", "PROTECT", "HACKBACK", "WEBSITES", "BESAFE", "FACEBOOK", "SCUTTLEFLD", "NICKLOON", "IPAD", "HOSPITAL WEBSITE", "SERPANNOUNCER", "NEOPETS", "HOTEL", "TODAY", "LIVE", "MUSIC", "GAMES", "VIDEO", "AUDIO", "TEXT", "LINK", "SHARE", "POST", "COMMENT", "LIKE", "FOLLOW", "FRIEND", "CONNECT", "JOIN", "SIGN UP", "LOG IN", "RESET", "CHANGE", "UPDATE", "DELETE", "REMOVE", "BLOCK", "REPORT", "FLAG", "COMPLAIN", "FEEDBACK", "HELP", "CONTACT", "ABOUT", "FAQ", "TERMS", "PRIVACY", "COOKIES", "AGREEMENT", "DISCLAIMER", "COPYRIGHT", "TRADE MARK", "REGISTERED", "PATENTED", "DESIGN", "COPYRIGHT", "TRADE MARK", "REGISTERED", "PATENTED", "DESIGN".

- 
- **Sending or receiving inappropriate content**
 - Sharing their location
 - **Inappropriate behaviour**
 - Obsessive focus on likes or comments
 - **Over-sharing**
 - Unrealistic sense of body image or reality
 - **Making friends with people they don't know**



Is your child ready?

The age of your child as well as their developmental stage and maturity can affect their ability to have a safe and positive experience online.



- **Minimum age requirements**
- **Development and maturity**
- **What are their social skills like?**



- **How do they deal with negative experiences?**
- **Will they come to you if they need help?**





Are you ready?

- Check out the social media site or app
 - Take time to be proactive
 - Be a great role model
- Getting started with social media
 - Talk honestly with your child
 - Explore together
 - Make an agreement

Report a Concern



National
Online
Safety





The Role of the Head of Year and the PSM

Kat Otoka and Hannah Scarlett

intake2022@king-ed.suffolk.sch.uk

Michaela Organ

on@king-ed.Suffolk.sch.uk

- Pastoral care
- Monitoring behaviour and progress
- Supporting your child to succeed
- Safeguarding
- Attendance



KS3 English

How to support your child with English at Secondary School

Miss Reynard

Email RD@King-ed.Suffolk.sch.uk



What do students study at KS3?

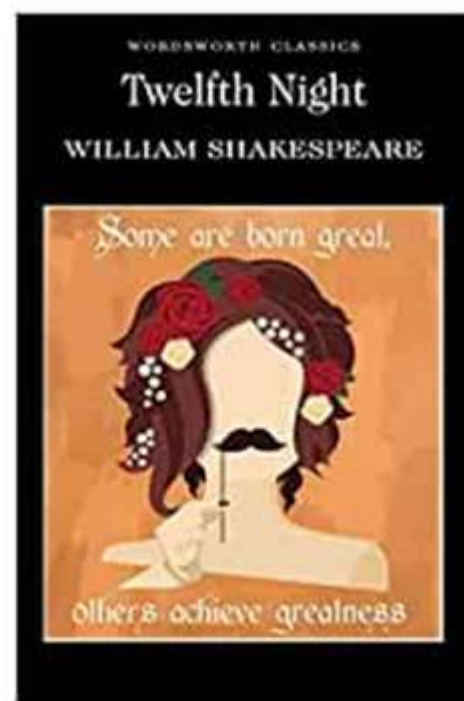
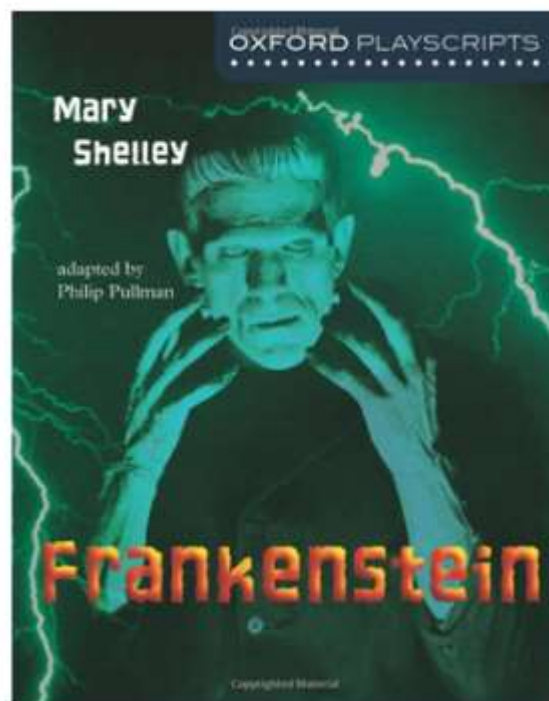
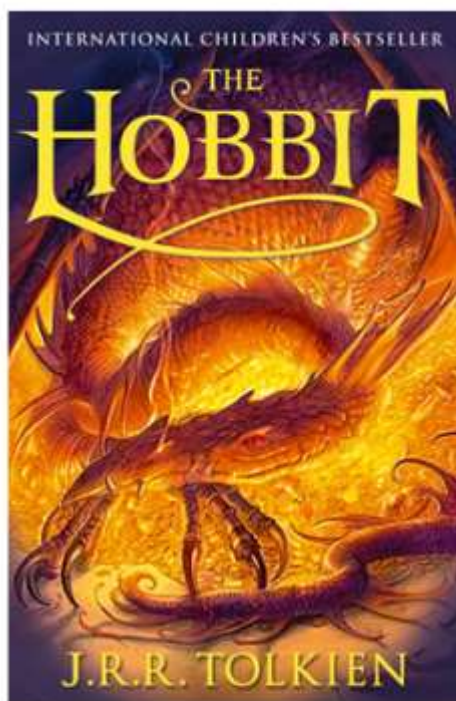
Key Stage Three English Overview – King Edward VI School 2020-21



	Autumn	Spring	Summer
Year 7	Storytelling <i>The Hobbit</i>  <i>Old and Middle English</i> 	Myths, Legends and Biblical Allusions <i>Frankenstein</i>  Myths, Legends and Biblical Allusions 	Shakespeare and The Romantics An introduction to Shakespeare's Comedies  An introduction to the Romantic Poets 
Year 8	The Modern Novel <i>Noughts and Crosses</i>    <i>Dystopia</i> 	The Gothic <i>Macbeth</i>  Nineteenth-century Gothic Fiction 	Characters and Voices Character and Voice Poetry  <i>Dickensian Characters</i> 
Year 9	Crime and Mystery <i>Ruby in the Smoke</i>  Crime and Mystery in the Nineteenth-century 	Outsiders <i>Of Mice and Men</i>  Portrayals of Outsiders 	Shakespearean Tragedies Tragedies and Romeo and Juliet (an introduction)  GCSE Spoken Language 



Knowledge Organisers

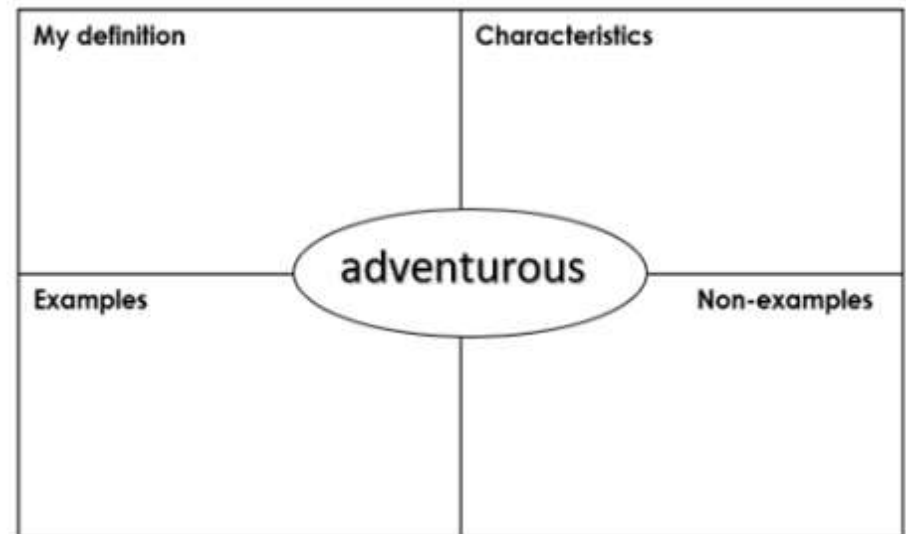
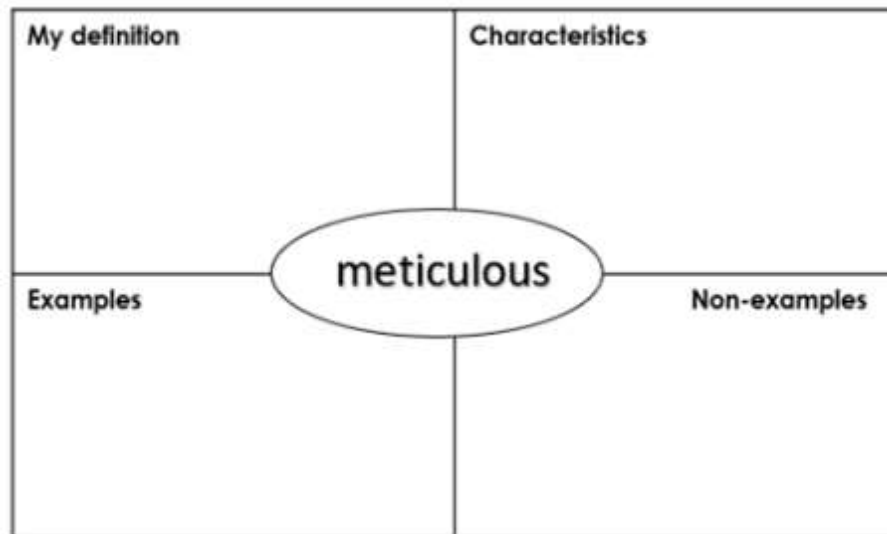
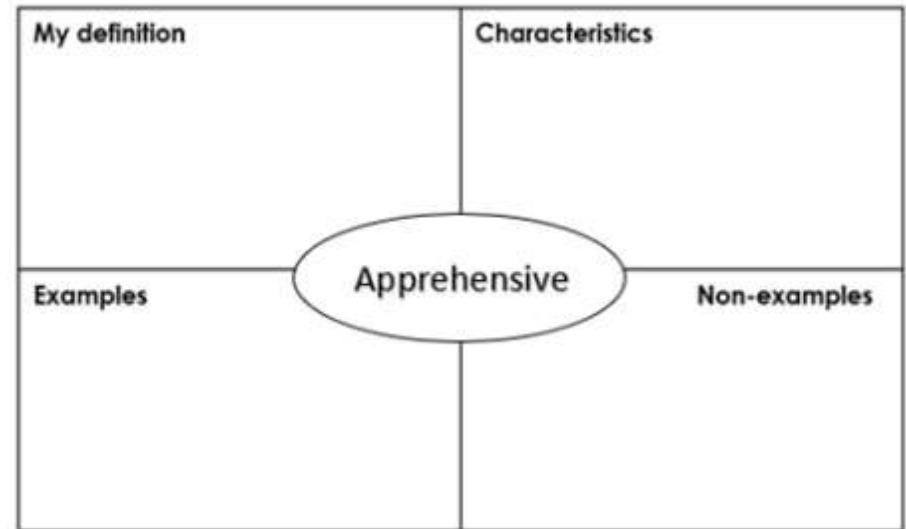
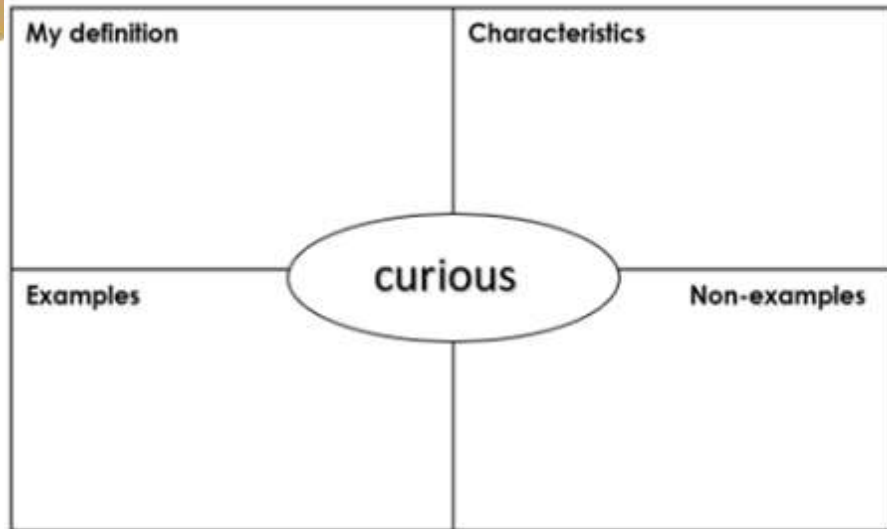


Name: _____

Knowledge Organiser



Vocabulary: The Freyer Diagram





Vocabulary: Talking at home!

- Literacy is defined as the foundational skills that provide the base on which to:
 - read and write,
 - speak, listen and interact,
 - and really think about complex ideas.
- You can help your child in English, and all subjects, by finding time to talk to them.
- Look at the key words in their knowledge organisers and find ways to bring that word into conversation at home.
- Ask students to explain ideas or concepts to you that they have been studying in class.



Why is reading so important?



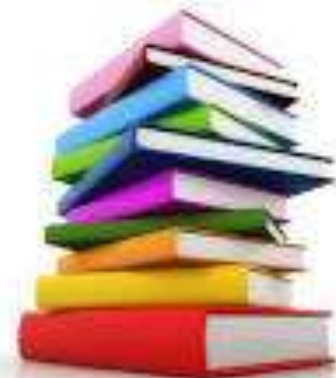
- Vocabulary
- Spelling
- Memory
- Focus and attentiveness
- Writing
- Comprehension
- Inference
- Analytical thought
- Evaluation

I will talk more about this in my session on Reluctant Readers!

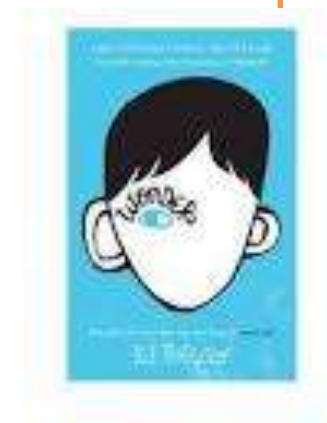
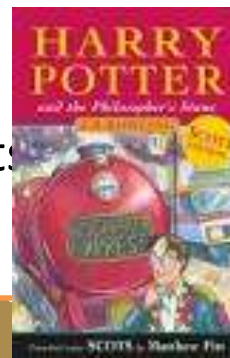
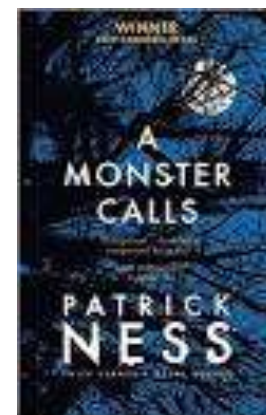
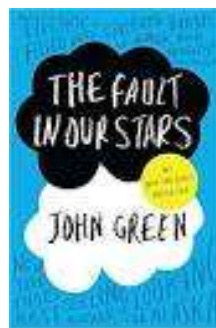
Key Message:
Students should be reading for at least an hour a week.



Reading Strategies



- ❖ A range of texts
- ❖ Read often
- ❖ Skimming and scanning
- ❖ Discussion
- ❖ Visible reading
- ❖ Reading aloud → adults, siblings, pets





Extended Writing Strategies



❖ Planning

❖ Independent proof-reading

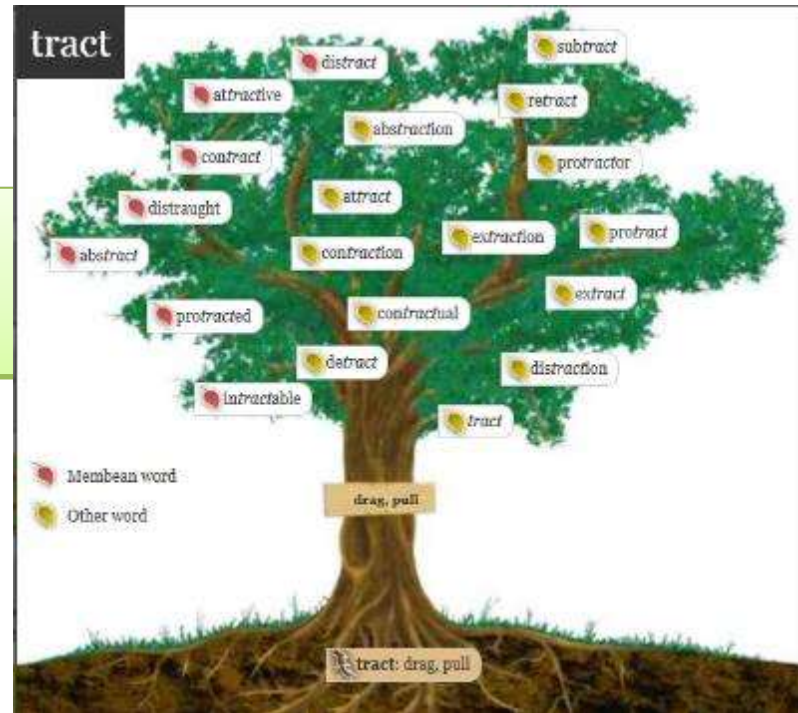
- capital letters
- spellings
- punctuation
- sentences
- paragraphing (TiPToP)
- vocabulary

Any students interested in contributing to the school magazine should contact Miss Warner (WA@king-ed.suffolk.sch.uk). Opportunities include non-fiction article writing, art, photography, creative writing, and poetry.



Spelling Strategies

- ❖ Break it into sounds (Wed-nes-day)
- ❖ Break it into syllables (re-mem-ber)
- ❖ Use mnemonics (necessary = 1 Collar, 2 Sleeves)
- ❖ Refer to a word in the same family (muscle ~ muscular)
- ❖ Words within words (a rat in speARATe)
- ❖ Refer to etymology (bi + cycle = two + wheels)
- ❖ Apply spelling rules e.g. doubling consonant for short vowel (writing, but written)
- ❖ Learn by sight (look, cover, write, check)





Helpful Online Resources

Reading

- ❖ Carnegie long list
- ❖ Newsround
- ❖ BBC News
- ❖ The Guardian: Comment is Free (or any other opinion articles)

Vocabulary and Spelling

- ❖ Membean

General

- ❖ BBC Bitesize – KS3 English

Handy Free Apps

- ❖ 7 Little Words
- ❖ Word of the Day
- ❖ Words with Friends
- ❖ Wordscape





How to support your child with Maths at Secondary School

Advice from Robin Woodhouse – Head of Maths



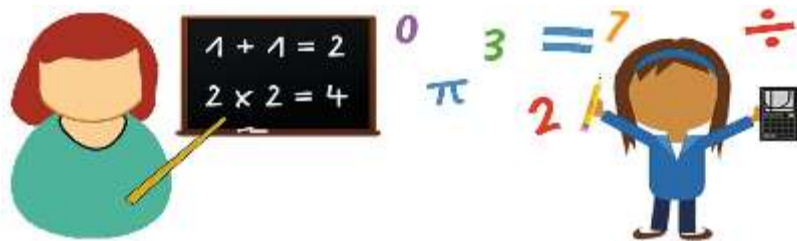
Respect | Aspiration | Creativity
Inspiring young people in Bury St Edmunds since 1550



KS3 Maths



- Students follow a mastery scheme of work, this focuses on problem solving.
- There is a top set and then two mixed sets below spread over the three divisions.
- Homework is set and due every Monday on MathsWatch - if you can, please help your child if they are stuck.



MathsWatch



How to Support your Child with Reading

Parents' Information Evening



"The world
belongs to those
who read."

Megan Reynard

Subject Leader for English
& Assistant Headteacher
Teaching & Learning

RD@king-ed.Suffolk.sch.uk



The importance of reading:

GCSE subject	Correlation
English Language	0.65
Geography	0.65
Maths	0.63
History	0.61
Science Combined	0.61
English Literature	0.60
Drama	0.57
Citizenship	0.56
German	0.55

- Reading regularly is not just important for your child to do well in English, but vital for them to succeed throughout their schooling and is a key life skill



What do we offer?

- **Accelerated Reader (AR) Programme and Lessons for Year 8**
 - Star Reading & AR quizzing on books
 - Individualised support for students who struggle to find books they enjoy reading
 - Individualised support for keen readers who need a new challenge or who are 'stuck' on comfortable books/series
- Opportunities for **sustained silent reading** in English, tutor time and other subjects
- **Dynamic library** open the whole day
- **Recommended reads booklists** to meet every reading need, along with ideas and strategies for parents of **reluctant readers (see parent bulletin)**
- **Reading Ambassadors** – Y7s reading to older students
- **Literacy Intervention Tutor – Miss Baxter**
- **Many reading events and activities, including:**
 - Christmas Book Advent
 - Readathon Summer reading programme this year
 - Carnegie Shadowing
 - Intervention for selected students
 - Reading Dog



It's OK for you
to be a learner
too!

Why read with your child?

- Did you know that the average reading age for a GCSE exam paper is **15.8** years?
- To give your child the best possible chance of succeeding in their exams, we need to support them in reading or

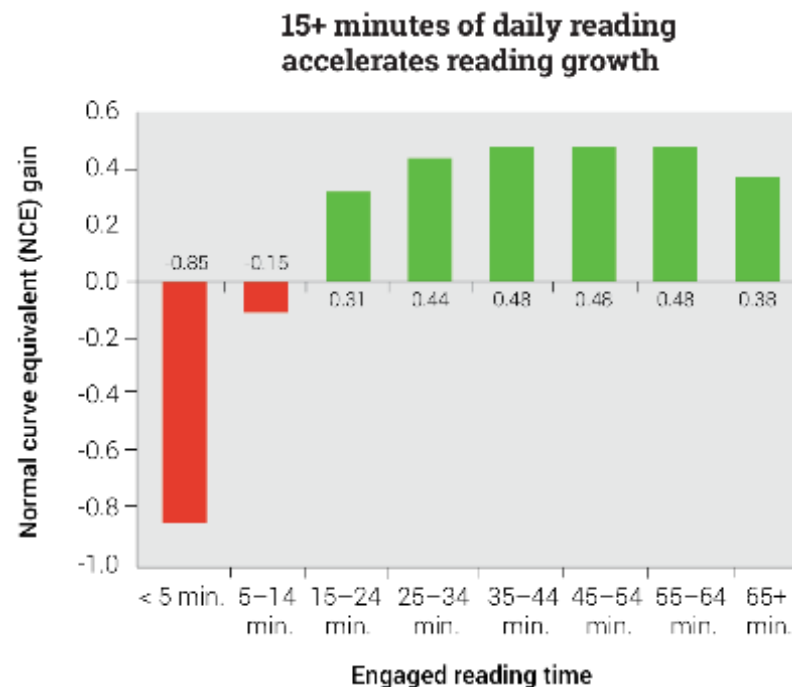




Benefits of increased daily reading:

An analysis comparing the engaged reading time and reading scores of more than 2.2 million students found that students who read less than five minutes per day saw the lowest levels of growth, well below the national average.² Even students who read 5–14 minutes per day saw sluggish gains that were below the national average.

Only students who read 15 minutes or more a day saw **accelerated reading gains**—that is, gains higher than the national average—and students who read just over a half-hour to an hour per day saw the greatest gains of all.



Please encourage your child to read at home, as well as in school



Reading to them 6-7 days per week has the same effect as being almost 12 months older.

Research snapshots:

15 minutes seems to be the "magic number" at which students start seeing substantial positive gains in reading achievement; students who read just over a half-hour to an hour per day see the greatest gains of all.

READING IS GOOD FOR YOU

On average, readers have better:



Physical
Health



Empathy



Mental
Health

"Reading for pleasure is the single biggest factor in success later in life, outside of an education. Study after study has shown that those children who read for pleasure are the ones who are most likely to fulfil their ambitions. If your child reads, they will succeed – it's that simple."

Bali Rai



Top tips for reading with your child:

- Choose a quiet and comfortable space – avoid busy areas where you might get disturbed by other family members
- Make sure you choose a time where you don't feel rushed
- Ask your child why they chose this book and take an interest
- Become a reading role model yourself – read in front of your child and regularly discuss what you're reading. Involve the whole family!
- Think of an appropriate method of incentivising/rewarding your child for reading at home
- Use appropriate tools for SEND – for example an overlay or reading ruler
- Don't correct everything





“Reading is essential for those who seek to rise above the ordinary.”

Jim Rohn





Keep in touch



@king-ed.suffolk.sch.uk



Key Dates

6 October	Open Evening
21 October	Staff Training Day
24-28 October	Half Term
25 November	Progress Review 1 published
30 November & 1 December	Y7 Parents' Evening
16 December	End of Term



Respect | Aspiration | Creativity
Inspiring young people in Bury St Edmunds since 1550