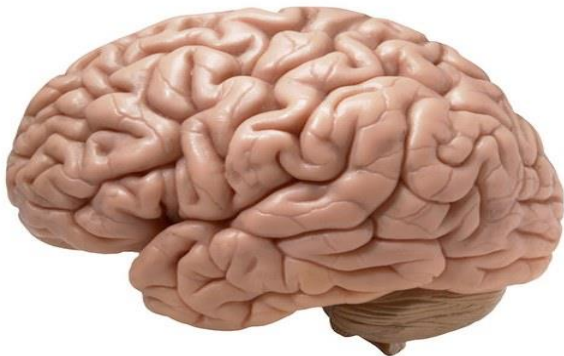




Welcome to Psychology and Sociology!



What is Psychology all about?

Psychology is the scientific study of human and animal behaviour.

The key question we ask is '*Why do people behave in the way that they do?*'.



What is Sociology all about?

Sociology is the study of society and its functions.

The key question we ask is '***What is happening in society and why?***'



The subject matter in Psychology is very wide. These are some of the questions we have tried to answer at GCSE:

How does your brain develop?

How does your memory work?

How does your brain affect your behaviour?

What are the causes of depression and addiction, and how may these be treated?

How do you develop a sense of identity?

Why do you need to sleep and dream?

How do psychologists conduct their research?

How do other people influence our behaviour?

Psychology



The subject matter in Sociology is very wide. These are some of the questions we have tried to answer at GCSE:

What is culture?

Does nature or nurture have the greatest influence on our behaviour?

How do agents in society such as the family and the media affect individuals?

Who commits crime and why?

What are the barriers to educational achievement?

Why is society so unequal?

What types of family exist and how have they changed?

What is poverty and who does it affect?

How do sociologists conduct their research?

What skills do I need to study Psychology?

Literacy skills



A good memory

Scientifically minded



Mathematical skills

An interest in people



Ability to discuss & debate topical issues

Respectful & mindful of others

What skills do I need to study Sociology?

Literacy
skills



An
interest in
current
affairs

An
interest in
people



A good
memory



Ability to
discuss &
debate
topical
issues

Respectful
& mindful
of others

What is the difference between Psychology & Sociology?

Psychology is focussed on the **behaviour of the individual**, whereas Sociology examines society as a whole.

Both subjects are **social sciences**.



Psychology is **scientific** and **mathematical**; both subjects require **extended writing skills** and a good level of literacy.

What can I do with a Psychology GCSE?

Any career than involves **dealing with people**.

If you are going into **teaching, law, nursing** or the **police force**, Psychology is an area you will be required to study as part of your training.

Some of our past students have gone on to careers linked specifically to Psychology, such as **Criminologists**, Probation Officers, Sports Psychologists, **Educational Psychologists** and early child care.

In other fields Psychology is used widely in both **Politics** and **Advertising**, as they both deal with assessing people's behaviour and trying to change opinions.

In short, this subject will not close any doors and certainly open a whole range of new ones!



What can I do with a Sociology GCSE?

Any career that involves **dealing with people**.

Sociology can help in careers such as **charity work**, prison officer, teacher, social worker and nurses. Even doctors have to take a Sociology module at university!

Sociology is also helpful in **non-public sector** roles such as HR, marketing, journalism, and the law.

In short, this subject will not close any doors and certainly open a whole range of new ones!

