



# King Edward VI School

Inspiring young people in Bury St Edmunds since 1550





Welcome to  
King Edward VI School



Welcome to King Edward VI, a proudly inclusive school which has been inspiring young people in Bury St Edmunds since 1550. Our students join King Edward VI School as children and leave as young adults, equipped with the currency and confidence to thrive as global citizens. Our core values of

### ‘Respect’, ‘Aspiration’ and ‘Creativity’

guide us through our work as teachers, and help each and every one of our students - your children - find their place to thrive.

Picture your child as a linguist, a scientist, an artist, a performer, an academic, an engineer, a mathematician, an Olympian, a doctor, a lawyer, an explorer or an author. Imagine the thrill and satisfaction of debating, singing with No Girls Allowed, learning Latin, playing hockey, composing film music, playing handball, reading poetry, sculpting with clay, travelling to China, playing chess, leading other students, learning Mandarin, representing the school - aspiring to new heights.

Each year, many students come to us directly as a result of parental preference rather than catchment area. We believe that every member of our school community should demonstrate care for others, strive to achieve their best (no matter how tough the challenge), and develop their creative talents.

I look forward to meeting you soon.

Lee Walker  
Headteacher

# Debating

We deliver outstanding opportunities for Debating and were National Finalists in the International Competition for Young Debaters every year between 2005 and 2017. In 2015-2016 we made the Finals of every major debating tournament including the Cambridge, Oxford and Durham Unions. Last year, we reached the Finals of the Oxford Schools' Debating competition, the largest British Parliamentary school-level debate competition in the world. We were also Finalists in the PiXL 'Up for Debate' competition.

## Quantifiable Success

We are very proud of the success of our most recent cohort of Year 11 students. At GCSE, 69% reached Grade 4 or higher in both English and Maths, and 48% Grade 5 or higher. The progress made by our students, compared to their respective starting points, is - once again - set to be significantly above the national average.



## Active Lives

We provide opportunities for our most competitive students, and for those who haven't previously found an activity they feel confident doing. Here are some of the

less well-known activities we run with our students, and the local and national organisations with which we work:

Emma Holloway Disability Festival, Active Healthy Minds, Beyond the Baseline, Athlete Mentors, Town Indoor Athletics Festival, Sports Leaders

‘It feels exciting to be in a bigger school with lots of opportunities’

George, Yr 7



(Qualifications and Training), Young Ambassadors, Inclusive Sports Festival, Suffolk Youth Games Co-hosts, LTA School of Tennis, Trampolining, Indoor Bowls, Softball/Baseball, Suffolk Golf Foundation, Girls Active Ambassadors, No Limits Academy, Young Coach Academy, and skiing.

King Edward VI School holds the Youth Sport Trust Gold Award and the School Games Platinum Mark. We are also a Youth Sports Trust Lead School for Leadership, Coaching, Volunteering, Health and Well-being.



## Student Leadership

Our flagship leadership project is our 12-year partnership with the Yangjing Juyuan Experimental School, Shanghai, through which our students who travel to China, and those who take part in our Legacy programme, experience a unique leadership experience in a culture very different from our own. The School Council is led by the Head Boy and Head Girl and their deputies, and a Student Leader chairs each sub-committee. Two Head Prefects lead the school's prefect team, comprising 30 students from Year 11.

Our hugely successful 'This Girl Can Lead' campaign aims to develop the confidence and aspirations of girls within the field of sports leadership. Our aforementioned School Games Platinum Mark status is, in part, acknowledgement of our commitment to student leadership.





More than ever before we believe that all students should have the opportunity to embrace other countries and cultures to inspire interest, understanding and respect. Our students benefit from our unrivalled international leadership programme, in which we have strong links with Shanghai, Spain, France and Germany. They can also participate in the Duke of Edinburgh Award scheme, the Sports Leadership scheme, The PiXL Edge Award, College Leadership and other challenging programmes including World Challenge.

## Church of England

We are a Church of England School and enjoy very close links with St Edmundsbury Cathedral through our involvement in Crimson Glory, as well as Lunchtime Recitals, Remembrance Day services, Christmas Celebrations, and our Musician in Residence - the Cathedral's Organ Scholar.

‘The teachers are really kind and they make learning fun’

Lily, Yr 7



# Dance

The school has partnerships with The Royal Ballet School, Dance East and Hofesh Shechter Dance Company. The 2020 annual Dance Show will - once again - be held at The Apex, Bury St Edmunds after the dazzling success of our previous three years' performances. The range of Dance genres, skills and performance opportunities on offer for students in Year 7 upwards is vast and this, along with our staff expertise, leads to many students going on to a career in dance.

# Drama

Drama is exciting and thriving at King Edward VI School. Our students give regular performances, many of which they direct and/or devise themselves. 117 students have come together for our upcoming production of 'Schools' We Will Rock You'. Last year, more than 80 students in Year 7 earned the Arts Award Bronze, and, notably, two students in Year 13 earned the Arts Award Gold.

Recent collaborations with the Music and Dance departments include: 'Sister Act', 'The Phantom of the Opera', 'Oliver!', 'Joseph and the Amazing Technicolour Dreamcoat', and 'Grease'. In addition to examination showcases, Drama productions include 'Attempts on her Life', 'Amadeus', 'Chatroom' and 'Songs for a New World'. Students have also taken part in performances of 'Macbeth', 'Othello' and 'A Midsummer Night's Dream' at the Shakespeare School's Festival and performed at professional theatre venues such as The Apex.







‘We are immensely proud to have been awarded Artsmark Platinum, the highest accolade accredited by Arts Council England.’

## Music

Music is at the heart of what we do, and the thriving department offers an outstanding range of opportunities for your child to discover. Sixty-six students returned, in July 2018, from a concert tour to France during which some of our ensembles including the Symphony Orchestra, Wind Band, Ex Silentio Choir, Big Band and Little Band performed three concerts, the final of which was staged at Disneyland, Paris. The next tour is to Holland in July 2020. Ensembles have recently sung and played in the National and Regional Festivals of Music for Youth, Symphony Hall - Birmingham, St Paul’s Cathedral, Snape Maltings and Wembley Arena.

# Your child's future starts



‘The pastoral care, staff and leadership at this school are exemplary. The choice of extra-curricular activities is amazing.’ Parent

## Your child's learning

The recent success of our students is testament to our commitment to the individual – to your child. We have regular and in-depth communications with our feeder primary schools, and respond to our students' hugely diverse learning needs, setting suitable learning challenges and overcoming barriers to learning for all.

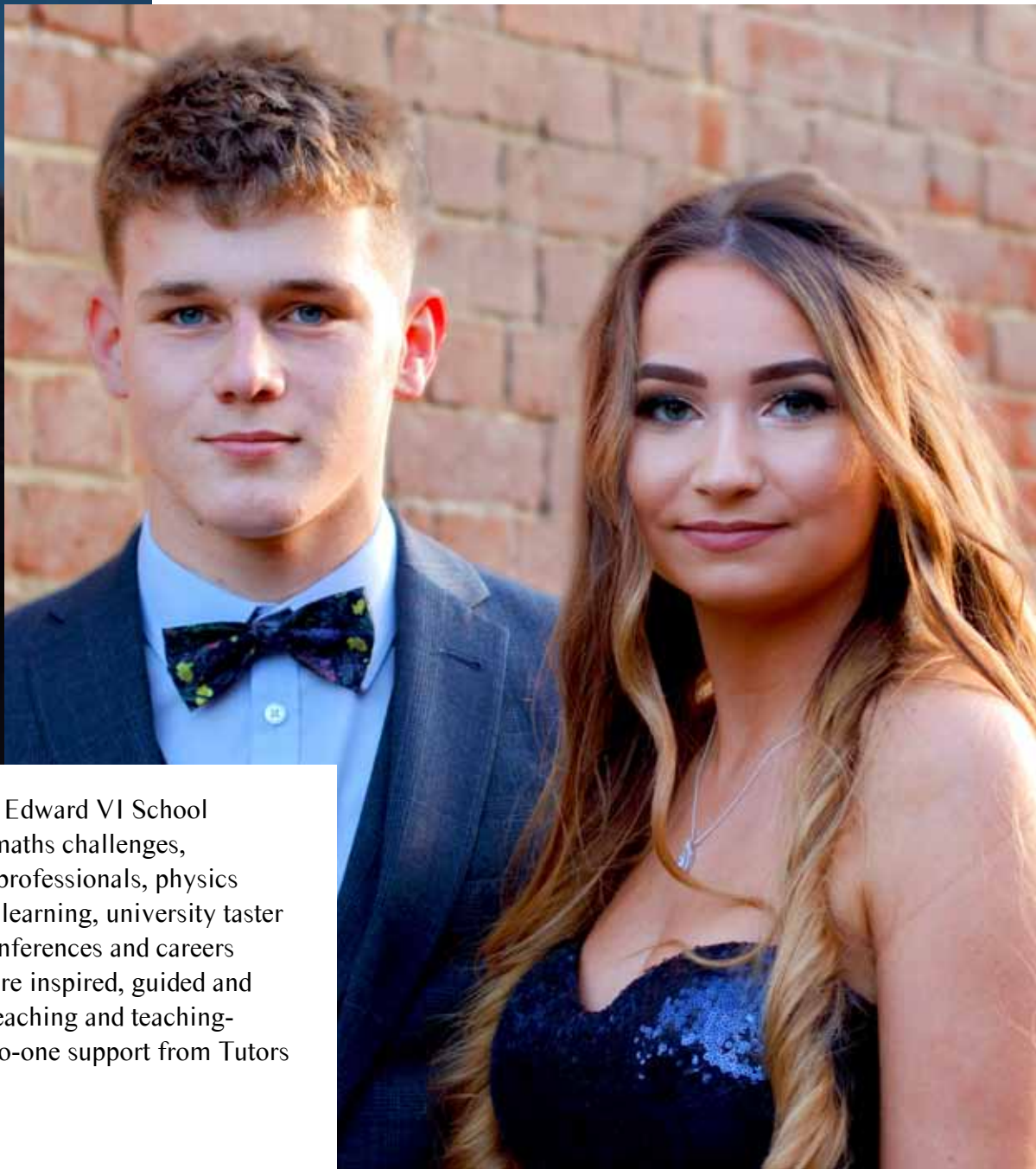
The county provision for deaf students is housed on site, and their base, known as ‘The Porthole’, is staffed by a specially trained Teacher of the Deaf and an excellent team of Teaching Assistants with additional expertise in working with deaf learners. Your child might thrive on the pitch, the stage, an archaeological dig site or a trip to foreign parts. They might thrive in a library, a place of worship, a gallery or a boardroom.

here....

## Your child's transition

We manage the transfer of each child from primary school to King Edward VI School with very great care. We enjoy our September visits to Year 6 children in their respective primary schools, and we look forward to meeting prospective students at our annual Open Evening in October. Tours of our school are always available, and parents and carers receive a plethora of helpful information regarding their child's Transition.

We hold 'Taster Tuesdays' for Year 5 children, and our students start their King Edward VI School career during transition days which take place in July when the children are still in Year 6. They then join us officially as Year 7 students the following September. Moreover, our work within the Bury Schools' Partnership enables us to create opportunities for younger children to learn from our older students. We have a bespoke Personal, Social, Health and Economic (PSHE) programme which starts in the first term of Year 7. We also have a team of Student Leaders who assist younger students whenever necessary. Walking around school we see happy, engaged students who are at home in their surroundings.



During their time at King Edward VI School students can take part in maths challenges, workshops with industry professionals, physics competitions, festivals of learning, university taster days, higher education conferences and careers workshops. All students are inspired, guided and supported by our expert teaching and teaching-assistant teams, and one-to-one support from Tutors and Heads of College.



King Edward VI School  
Grove Road Bury St Edmunds  
Suffolk IP33 3BH  
Telephone 01284 761393  
[admin@king-ed.suffolk.sch.uk](mailto:admin@king-ed.suffolk.sch.uk)  
[www.king-ed.suffolk.sch.uk](http://www.king-ed.suffolk.sch.uk)  
 [KingEdwardVISchool](https://www.facebook.com/KingEdwardVISchool)  
 [@KingEdVISchool](https://twitter.com/KingEdVISchool)

